

MATATOKI HEREFORD

MORE BULL FOR YOUR BUCK



AUCTION: ONLINE HELMSMAN www.yourbid.co.nz

Tues 23rd May 9am - Wed 24th May 9pm

View South Canterbury Bullwalk 23rd May

online: www.herefords.co.nz & www.yourbid.co.nz



Follow us on www.facebook.com/MatatokiHereford



MORE BULL FOR YOUR BUCK

PAUL & FIONA SCOTT PH: 03 612 9962

PAUL SCOTT: 027 296 3817

E: paul.fionascott@gmail.com

Matatoki Hereford, 61 Howells Rd, Maungati RD 2, Timaru 7972

VISITORS ALWAYS WELCOME

Directions to 61 Howells Road, Maungati:

From Cave: Travel 11 km along Pareora Cave Rd and Pareora Gorge Rd. At the monument turn right onto Limestone Rd and travel 7km to meet Howells Rd. We are first on the left.

From Timaru: Turn onto Beaconsfield Rd at Salt Water Creek travel out to Holme Station Bridge. Once over the bridge turn right into Pareora River Rd, take first left onto Craigmores Valley Rd. Travel past the golf course and turn right into Timaunga Rd. Stay on Timaunga Rd past the Maungati hall, go up the hill and take left onto Howells Rd. We are first on the left.

Bull-walk Tuesday 23rd May

We realise that physical inspection is vital in beef bull purchase decisions so please do come along on the South Canterbury Bull walk on Tuesday May 23rd or anytime by arrangement.

PGG Wrightson

Simon Eddington P: 027 590 8612

Jonty Hyslop P: 027 595 6450

Bruce Dunbar P: 027 595 6473

Joe Higgins P: 027 431 4041

Cameron Gray P: 027 494 0572

Kelvin Sadler P: 027 430 2029

Hazlett

Callum Dunnett P: 027 462 0126

Carrfields

Robbie Kilpratch P: 0275870131

BULLS TO BE SOLD VIA ONLINE HELMSMAN AUCTION SYSTEM ON www.yourbid.co.nz

We will be using Yourbid, an innovative and locally produced platform developed by renowned genetics providers Giddings family.

Auction participants will be able to bid directly or have their normal stock agent participate on their behalf in the same way as the other sales methods available in the marketplace.

Full assistance will be given on the bullwalk day to show how easy it is to sign up for yourbid.

The Breeding Program at Matatoki Hereford

We established the stud in Matatoki at the gateway to the Coromandel Peninsula in 2006 with a small amount of females purchased from dispersals and other opportunities. Since then we relocated to Maungati in 2008, 32k inland from Timaru and have steadily increased the herd numbers every year that sees us calving nearly 200 registered females this year.

We are a closed herd with only stud bull purchases / AI as an exception, all bulls fully recorded and registered, BVD tested clear, and vaccinated, 7 in 1 vaccinated, TB C10, and fully NAIT compliant. All sale bulls are scanned for carcass traits, 100k SNP tested for greater EBV accuracy, sire verification and screening for genetic defects and semen tested for fertility. Semen testing occurred on April 28 with all bulls passing XCELL breeding services evaluation procedure.

REFERENCE SIRES

	CE	BW	200	400	600	MatCow	Milk	SS	DTC	CW	EMA	RIB	RUMP	IMF
Beechwood In Time 7	+13.1	+0.2	+35	+63	+83	+60	+21	+3.7	-4.0	+69	+6.0	+0.5	+1.2	+0.2
Matariki 490	+0.8	+3.1	+27	+51	+69	+58	+6	+2.7	-3.4	+45	+3.8	+0.9	+1.1	+0.9
Kairuru Major	+1.2	+5.2	+38	+72	+101	+97	+8	+1.8	-2.7	+67	+5.1	+1.0	+1.5	+0.7
Matatoki Nepia	-0.4	+3.1	+35	+62	+77	+61	+13	+4.0	-5.5	+57	+4.8	+1.4	+1.9	+0.7
Breed Average	+2.8	+3.9	+34	+56	+79	+66	+17	+2.2	-3.1	+53	+3.9	+0.8	+1.0	+0.6



Beechwood In Time 7



Matariki 490

- Free 14 day insurance is available from the point of sale with FMG. See details in their advert at the back of the catalogue.
- Video footage of the bulls are available to see on the sale page on www.yourbid.co.nz and will feature on our facebook page.
- All successful purchasers will go into the draw for a Hereford Prime Gift Pack valued at \$200.
- Free Transport South Island wide, subsidy paid to North Island purchasers.

BREEDING

BETTER

BUSINESS

As part of New Zealand's largest Livestock network, our team of Genetics Specialists have more contacts, more reach and more market influence.

We provide more practical advice and more technical expertise. And, with the country's largest network and most popular sales events, we bring together more buyers and more sellers, delivering more value for all.

JOE HIGGINS
Mid South Canterbury
Livestock Manager
027 431 4041

If you're looking for a planned approach to success, give us a call today.

JONTY HYSLOP
Livestock Representative
027 595 6450

CAMERON GRAY
Livestock Representative
027 494 0572

SIMON EDDINGTON
Genetics Representative
027 590 8612

KELVIN SADLER
Livestock Representative
027 430 2029

JOHN MCKONE
Livestock Representative/
Head Auctioneer
027 229 9375

ROD SANDS
Livestock Representative
027 431 4043


BRUCE DUNBAR
Livestock Representative
027 595 6473


CALLUM MCDONALD
Genetics Representative
027 433 6443

GREG UREN
Livestock Representative
027 431 4051


ROB HARVEY
Livestock Representative
021 331 519

pggwrightson/livestock

 fb.com/pgwlivestock

 instagram.com/pgwlivestock

Lot 1: Matatoki U2 1002

	<p>Herd No: 1656210002 DOB: 28/08/2021</p> <p>Good length and outlook in the paddock. In Time 7 Gallant cross makes for a good pedigree.</p> <p>Sire verified, free of genetic defects & Homozygous Polled.</p>
---	---

- [ALLENDALE WATERHOUSE D1 Polled](#)
- [ALLENDALE ANZAC K4 \(IMP AUS\).\(ET\) Polled](#)
- [ALLENDALE DAWN B22 \(AI\).\(ET\).\(P\) Polled](#)
- **Sire: [BEECHWOOD IN TIME 7 Polled](#)**
 - [BEECHWOOD BLOW EM AWAY Polled](#)
 - [BEECHWOOD BELLA 416 \(GBM\) Polled](#)
 - [BEECHWOOD BELLA 207 Polled](#)
- Animal: [MATATOKI U2 Polled](#)**
 - [MATARIKI DUNSTAN Polled](#)
 - [MONYMUSK GALLANT 110089 \(BM\) Polled](#)
 - [MONYMUSK DOROTHY 070083 \(SBM\) Polled](#)
- **Dam: [MATATOKI SHEBA 1629 Polled](#)**
 - [LIMEHILLS CRACKER 9373 Polled](#)
 - [MATATOKI SHEBA 1325 Polled](#)
 - [MATATOKI SHEBA 07 Polled](#)


April 2023 Hereford BREEDPLAN																			
	Calving Ease DIR (%)	Calving Ease DTRS (%)	Gestation Length (days)	Birth Wt. (kg)	200 Day Wt (kg)	400 Day Wt (kg)	600 Day Wt (kg)	Mat Cow Wt (kg)	Milk (kg)	Maternal Value (kg)	Scrotal Size (cm)	Days to Calving (days)	Carcase Wt (kg)	Eye Muscle Area (sq cm)	Rib Fat (mm)	Rump Fat (mm)	Retail Beef Yield (%)	IMF (%)	Docility
EBV	+10.9	+6.5	-2.0	+0.5	+29	+55	+70	+60	+22	-	+1.9	-3.0	+56	+3.9	+0.5	+0.8	+0.9	+0.1	-
Accuracy	49%	40%	74%	74%	69%	69%	71%	62%	50%	-	76%	33%	58%	49%	51%	55%	49%	48%	-
Breed Avg. EBVs for 2021 Born Calves Click for Percentiles																			
EBV	+2.8	+2.3	-0.8	+3.9	+34	+56	+79	+66	+17	+25	+2.2	-3.1	+53	+3.9	+0.8	+1.0	+0.8	+0.6	+28

Traits Analysed: GL,CE,BWT,200WT,400WT,600WT,SS,FAT,EMA,IMF

WHY USE AN ONLINE HELMSAN??

- Most rational bull purchase system
- ALL Bulls available for sale concurrently
- Make comparisons and decisions based on merits of the bulls and purchasing budget.
- Plenty of time to resolve internet connectivity issues compared to online sequential auctions.
- Buyers need not be restricted to Lot Order
- Greater control over your bidding across multiple bull options.

Lot 2: Matatoki Underwood 1005

	Herd No: 1656210005 DOB: 28/08/2021
	Solid through the middle and good all round package.
	Sire verified, free of genetic defects & Homozygous Polled.

- [CAPETHORNE HOT SHOT 03 22 Polled](#)
- [MATARIKI HOLY-SMOKE \(BM\) Polled](#)
- [MATARIKI GIRLIE 00323 Polled](#)
- **Sire: MATATOKI NEPIA 1419 Polled**
- [MATATOKI GRAND Polled](#)
- [MATATOKI MIDNIGHT STAR 10 Polled](#)
- [APOTU PARK MIDNIGHT STAR Polled](#)
- **Animal: MATATOKI UNDERWOOD 1005 Polled**
- [CS BOOMER 29F Polled](#)
- [TLELL 29F RED CEDAR 8N \(IMP CAN\) Polled](#)
- [TLELL 38L GLORIA 4G Polled](#)
- **Dam: WESTHOLM MISS MELODY K15 Polled**
- [WESTHOLM FRAZER F76 Polled](#)
- [WESTHOLM MISS MELODY H29 Polled](#)
- [WESTHOLM MISS MELODY F24 Polled](#)

April 2023 Hereford BREEDPLAN																			
	Calving Ease DIR (%)	Calving Ease DTRS (%)	Gestation Length (days)	Birth Wt. (kg)	200 Day Wt (kg)	400 Day Wt (kg)	600 Day Wt (kg)	Mat Cow Wt (kg)	Milk (kg)	Maternal Value (kg)	Scrotal Size (cm)	Days to Calving (days)	Carcase Wt (kg)	Eye Muscle Area (sq cm)	Rib Fat (mm)	Rump Fat (mm)	Retail Beef Yield (%)	IMF (%)	Docility
EBV	+3.9	+3.4	-3.3	+3.4	+34	+63	+79	+59	+17	-	+3.3	-4.8	+53	+4.8	+1.5	+1.9	+1.0	+0.4	-
Accuracy	46%	40%	73%	73%	68%	68%	70%	61%	56%	-	75%	33%	57%	47%	50%	53%	47%	46%	-
Breed Avg. EBVs for 2021 Born Calves Click for Percentiles																			
EBV	+2.8	+2.3	-0.8	+3.9	+34	+56	+79	+66	+17	+25	+2.2	-3.1	+53	+3.9	+0.8	+1.0	+0.8	+0.6	+28

Traits Analysed: GL, CE, BWT, 200WT, 400WT, 600WT, SS, FAT, EMA, IMF

HEREFORD PRIME NZ

EXPERTS IN GRASS-FED FREE-RANGE BEEF



TO SUPPLY HEREFORD PRIME,
OR TO FIND OUT MORE, CONTACT NATALIE CAMPBELL
ON MOBLIE: 0277 323 448 OR EMAIL: herefordprime@pbbnz.com

WWW.HEREFORDPRIME.CO.NZ

HerefordPRIME




[WWW.INSTAGRAM.COM/HEREFORDPRIMENZ](https://www.instagram.com/herefordprimenz)



[WWW.FACEBOOK.COM/HEREFORDPRIMENZ](https://www.facebook.com/herefordprimenz)



Lot 3: Matatoki U Turn 1010

	<p>Herd No: 1656210010 DOB: 28/08/2021</p> <p>A really good bull this. Great EBVs and hard to fault in the paddock. Streaker dams first calf. Top package for heifers or cows.</p> <p>Sire verified, free of genetic defects & Homozygous Polled.</p>
---	---

- [ALLENDALE WATERHOUSE D1 Polled](#)
- [ALLENDALE ANZAC K4 \(IMP AUS\) \(ET\) Polled](#)
- [ALLENDALE DAWN B22 \(AI\) \(ET\) \(P\) Polled](#)
- **Sire: [BEECHWOOD IN TIME 7 Polled](#)**
 - [BEECHWOOD BLOW EM AWAY Polled](#)
 - [BEECHWOOD BELLA 416 \(GBM\) Polled](#)
 - [BEECHWOOD BELLA 207 Polled](#)
- Animal: [MATATOKI U TURN 1010 Polled](#)**
 - [LIMEHILLS STARTER 131040 \(BM\) Polled](#)
 - [LIMEHILLS STREAKER 150368 \(BM\) Polled](#)
 - [LIMEHILLS INA 130909 \(SBM\) Polled](#)
- **Dam: [MATATOKI AMETHYST 9017 Polled](#)**
 - [MONYMUSK GRENADE 110114 Polled](#)
 - [MATATOKI AMETHYST 1667 Polled](#)
 - [MATATOKI AMETHYST 1218 Polled](#)

April 2023 Hereford BREEDPLAN																			
	Calving Ease DIR (%)	Calving Ease DTRS (%)	Gestation Length (days)	Birth Wt (kg)	200 Day Wt (kg)	400 Day Wt (kg)	600 Day Wt (kg)	Mat Cow Wt (kg)	Milk (kg)	Maternal Value (kg)	Scrotal Size (cm)	Days to Calving (days)	Carcase Wt (kg)	Eye Muscle Area (sq cm)	Rib Fat (mm)	Rump Fat (mm)	Retail Beef Yield (%)	IMF (%)	Dociility
EBV	+10.9	+9.0	-0.2	+1.1	+34	+63	+86	+63	+26	-	+2.5	-4.8	+64	+4.0	+1.1	+1.9	+0.9	+0.8	-
Accuracy	48%	38%	69%	73%	68%	68%	70%	61%	48%	-	75%	31%	57%	48%	51%	55%	48%	48%	-
Breed Avg. EBVs for 2021 Born Calves Click for Percentiles																			
EBV	+2.8	+2.3	-0.8	+3.9	+34	+56	+79	+66	+17	+25	+2.2	-3.1	+53	+3.9	+0.8	+1.0	+0.8	+0.6	+28

Traits Analysed: GL,CE,BWT,200WT,400WT,600WT,SS,FAT,EMA,IMF



SPECIALISTS IN CATTLE REPRODUCTION



‘YOUR SUCCESS IS OUR BUSINESS’ SUPPORTING THE BEEF INDUSTRY SINCE 1996

Export approved semen collection facility • Bull fertility and evaluation testing
Synchronization and AI programming service • On farm semen collection
Reliable storage and despatch • New Zealand wide service

Xcell Breeding and Veterinary Services 143 Rangiora Woodend Road, Woodend 7610,
North Canterbury ph 03 312 2191 www.xcell.co.nz

Lot 4: Matatoki USO 1011



Herd No: 1656210011

DOB: 28/08/2021

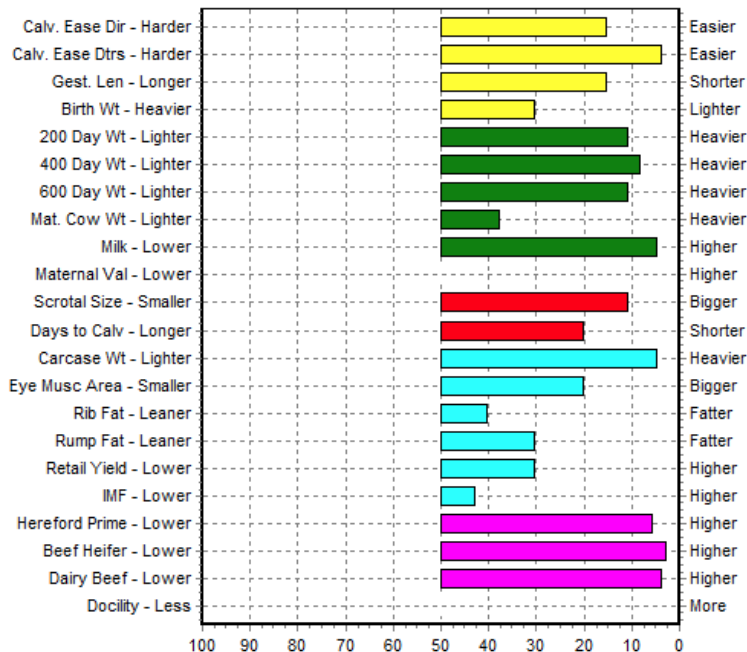
Fantastic pedigree EBVs and all round genetic package. Used lightly in herd. Subject to higher reserve managed separately since mating. Semen held for in herd use.
Sire verified, free of genetic defects & Homozygous Polled.

- [ALLEDALE WATERHOUSE D1 Polled](#)
- [ALLEDALE ANZAC K4 \(IMP AUS\) \(ET\) Polled](#)
- [ALLEDALE DAWN B22 \(AI\) \(ET\) \(P\) Polled](#)
- **Sire: [BEECHWOOD IN TIME 7 Polled](#)**
- [BEECHWOOD BLOW EM AWAY Polled](#)
- [BEECHWOOD BELLA 416 \(GBM\) Polled](#)
- [BEECHWOOD BELLA 207 Polled](#)
- Animal: [MATATOKI USO 1011 Polled](#)**
- [LIMEHILLS STARTER 131040 \(BM\) Polled](#)
- [LIMEHILLS STREAKER 150368 \(BM\) Polled](#)
- [LIMEHILLS INA 130909 \(SBM\) Polled](#)
- **Dam: [MATATOKI SPOT 9001 Polled](#)**
- [MONYMUSK GALLANT 110089 \(BM\) Polled](#)
- [MATATOKI SPOT 1618 Polled](#)
- [BEECHWOOD SPOT 637 Polled](#)

April 2023 Hereford BREEDPLAN																			
	Calving Ease DIR (%)	Calving Ease DTRS (%)	Gestation Length (days)	Birth Wt. (kg)	200 Day Wt (kg)	400 Day Wt (kg)	600 Day Wt (kg)	Mat Cow Wt (kg)	Milk (kg)	Maternal Value (kg)	Scrotal Size (cm)	Days to Calving (days)	Carcase Wt (kg)	Eye Muscle Area (sq cm)	Rib Fat (mm)	Rump Fat (mm)	Retail Beef Yield (%)	IMF (%)	Docility
EBV	+8.0	+7.9	-2.6	+2.8	+41	+72	+98	+72	+25	-	+3.1	-4.4	+72	+5.1	+1.0	+1.6	+1.2	+0.7	-
Accuracy	49%	38%	74%	72%	67%	66%	64%	56%	48%	-	59%	31%	54%	45%	48%	51%	43%	48%	-
Breed Avg. EBVs for 2021 Born Calves Click for Percentiles																			
EBV	+2.8	+2.3	-0.8	+3.9	+34	+56	+79	+66	+17	+25	+2.2	-3.1	+53	+3.9	+0.8	+1.0	+0.8	+0.6	+28

Traits Analysed: GL, CE, BWT, 200WT, 400WT, 600WT, SS, FAT, EMA, IMF

EBV Percentiles for MATATOKI USO 1011



50th Percentile is the Breed Avg. EBVs for 2021 Born Calves

Lot 5: Matatoki Ullrich 1013



Herd No: 1656210013

DOB: 30/08/2021

A little more frame and length than others offered.
Good eye pigment and will grow on yet. Heaviest bull.

Sire verified, free of genetic defects & Homozygous Polled.

— [CAPETHORNE HOT SHOT 03 22 Polled](#)

— [MATARIKI HOLY-SMOKE \(BM\) Polled](#)

— [MATARIKI GIRLIE 00323 Polled](#)

— **Sire: [MATATOKI NEPIA 1419 Polled](#)**

— [MATATOKI GRAND Polled](#)

— [MATATOKI MIDNIGHT STAR 10 Polled](#)

— [APOTU PARK MIDNIGHT STAR Polled](#)

Animal: [MATATOKI ULLRICH 1013 Polled](#)

— [KOANUI ROCKET Q334 \(ET\) \(BM\) Polled](#)

— [KOANUI ROCKET 0219 \(BM\) Polled](#)

— [KOANUI ANGEL R187 \(SBM\) Polled](#)

— **Dam: [MATATOKI SPOT 1712 Polled](#)**

— [MONYMUSK GRENADE 110114 Polled](#)

— [MATATOKI SPOT 1502 Polled](#)

— [MATATOKI SPOT 100 Polled](#)

April 2023 Hereford BREEDPLAN																				
	Calving Ease DIR (%)	Calving Ease DTRS (%)	Gestation Length (days)	Birth Wt. (kg)	200 Day Wt (kg)	400 Day Wt (kg)	600 Day Wt (kg)	Mat Cow Wt (kg)	Milk (kg)	Maternal Value (kg)	Scrotal Size (cm)	Days to Calving (days)	Carcase Wt (kg)	Eye Muscle Area (sq cm)	Rib Fat (mm)	Rump Fat (mm)	Retail Beef Yield (%)	IMF (%)	Docility	
EBV	+3.4	+4.3	-1.5	+4.1	+39	+68	+90	+82	+17	-	+3.1	-2.8	+61	+3.9	+0.8	+1.2	+1.1	+0.3	-	
Accuracy	45%	40%	73%	72%	66%	67%	69%	60%	53%	-	75%	38%	56%	48%	50%	53%	48%	47%	-	
Breed Avg. EBVs for 2021 Born Calves Click for Percentiles																				
EBV	+2.8	+2.3	-0.8	+3.9	+34	+56	+79	+66	+17	+25	+2.2	-3.1	+53	+3.9	+0.8	+1.0	+0.8	+0.6	+28	

Traits Analysed: GL, CE, BWT, 200WT, 400WT, 600WT, SS, FAT, EMA, IMF

EYE ON THE PREMIUM?

Using NZ Herefords genetics will make your beef herd more profitable, qualifying you for added premiums, and gaining a number of proven, long standing stock performance benefits.


PREMIUM PLUS!

- Processors will pay a premium for NZ Herefords or Hereford^x stock that qualify under processor specifications
- 12% increase in profitability with hybrid vigour
- Hereford cattle rank #1 and 2 for IMF marbling across all the major Angus, Hereford, Simmental Studs across the country*
- Hereford bulls overwhelmingly outperformed Angus Bulls for structural integrity and longevity.+


To purchase a registered Hereford Bull, talk to your stock agent or visit www.herefords.co.nz

Hereford X
The best of breeds

Lot 6: Matatoki Ultimate 1034

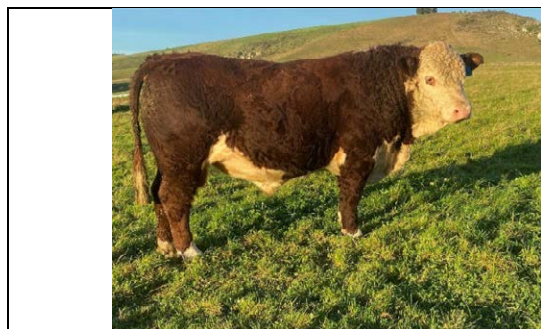
	<p>Herd No: 1656210034 DOB: 05/09/2021</p> <p>Classy allround quiet package. Well hooded eyeset with good pigment.</p> <p>Sire verified, free of genetic defects & Homozygous Polled.</p>
---	---

- [KOANUI CHIEFLY 9068 Polled](#)
- [KOANUI CHIEFLY 2510 Polled](#)
- [KOANUI HEATHER 6524 Polled](#)
- **Sire: [MATARIKI 150490 Polled](#)**
 - [MATARIKI GOVERNOR 060100 Polled](#)
 - [MATARIKI GIRLIE 110635 Polled](#)
 - [MATARIKI GIRLIE 03868 Polled](#)
- Animal: [MATATOKI ULTIMATE 1034 Polled](#)**
 - [MATARIKI HEMINGWAY Polled](#)
 - [MONYMUSK GRENADE 110114 Polled](#)
 - [MONYMUSK SPOT 080015 \(SBM\) Polled](#)
- **Dam: [MATATOKI BABS 1531 Polled](#)**
 - [OKAWA NAVAL 8040 Polled](#)
 - [MATATOKI BABS 1104 Polled](#)
 - [MATATOKI BABS 06 4 Polled](#)

April 2023 Hereford BREEDPLAN																			
	Calving Ease DIR (%)	Calving Ease DTRS (%)	Gestation Length (days)	Birth Wt. (kg)	200 Day Wt (kg)	400 Day Wt (kg)	600 Day Wt (kg)	Mat Cow Wt (kg)	Milk (kg)	Maternal Value (kg)	Scrotal Size (cm)	Days to Calving (days)	Carcase Wt (kg)	Eye Muscle Area (sq cm)	Rib Fat (mm)	Rump Fat (mm)	Retail Beef Yield (%)	IMF (%)	Docility
EBV	+2.1	-5.2	+0.5	+3.5	+29	+58	+79	+71	+9	-	+2.0	-3.7	+54	+4.3	+0.8	+0.9	+1.0	+0.8	-
Accuracy	46%	40%	72%	73%	69%	69%	71%	62%	53%	-	75%	31%	58%	47%	51%	55%	49%	49%	-
Breed Avg. EBVs for 2021 Born Calves Click for Percentiles																			
EBV	+2.8	+2.3	-0.8	+3.9	+34	+56	+79	+66	+17	+25	+2.2	-3.1	+53	+3.9	+0.8	+1.0	+0.8	+0.6	+28

Traits Analysed: GL,CE,BWT,200WT,400WT,600WT,SS,FAT,EMA,IMF

Lot 7: Matatoki Uniter 1045



Herd No: 1656210045

DOB: 08/09/2021

My favourite bull to look at in the paddock.
Cosmetically perfect, meaty and just easy doing.
Sire verified, free of genetic defects & Homozygous Polled.

— [KOANUI ROMAN 0293 \(BM\) Polled](#)

— [KAIRURU IKE 110006 Polled](#)

— [KAIRURU MOONBEAM 090031 Polled](#)

— **Sire: [KAIRURU MAJOR 150555 Polled](#)**

— [MATARIKI HOLY-SMOKE \(BM\) Polled](#)

— [KAIRURU DIANA 100008 Polled](#)

— [KAIRURU DIANA 080043 Polled](#)

Animal: [MATATOKI UNITER 1045 Polled](#)

— [KOANUI SAFETY 8557 Polled](#)

— [MATARIKI 120087 \(ET\) Polled](#)

— [MATARIKI GIRLIE 00323 Polled](#)

— **Dam: [MATATOKI MIDNIGHT STAR 1507 Polled](#)**

— [LIMEHILLS CRACKER 9373 Polled](#)

— [MATATOKI MIDNIGHT STAR 1327 Polled](#)

— [APOTU PARK MIDNIGHT STAR Polled](#)

April 2023 Hereford BREEDPLAN																			
	Calving Ease DIR (%)	Calving Ease DTRS (%)	Gestation Length (days)	Birth Wt. (kg)	200 Day Wt (kg)	400 Day Wt (kg)	600 Day Wt (kg)	Mat Cow Wt (kg)	Milk (kg)	Maternal Value (kg)	Scrotal Size (cm)	Days to Calving (days)	Carcase Wt (kg)	Eye Muscle Area (sq cm)	Rib Fat (mm)	Rump Fat (mm)	Retail Beef Yield (%)	IMF (%)	Docility
EBV	+1.2	-3.2	+1.4	+3.4	+30	+57	+75	+66	+13	-	+2.5	-3.3	+48	+3.1	+1.1	+1.5	+0.4	+0.5	-
Accuracy	48%	41%	49%	74%	69%	68%	70%	59%	56%	-	75%	31%	57%	46%	44%	47%	42%	44%	-
Breed Avg. EBVs for 2021 Born Calves Click for Percentiles																			
EBV	+2.8	+2.3	-0.8	+3.9	+34	+56	+79	+66	+17	+25	+2.2	-3.1	+53	+3.9	+0.8	+1.0	+0.8	+0.6	+28

Traits Analysed: CE,BWT,200WT,400WT,600WT,SS,EMA,IMF

ST. ANDREWS TRANSPORT

Proud to be associated with
Matatoki Herefords

Main Road, St. Andrews

PO Box 137, Timaru

Email: satrans@xtra.co.nz

Cell: 027 4329 555

Phone: 03 612 6605

Fax: 03 612 6614

www.standrewstransport.co.nz

Lot 8: Matatoki Uxbridge 1081

	<p>Herd No: 1656210081 DOB: 14/09/2021</p> <p>Compact easy doing fella who is getting better and better. Very sound balance to his EBVs.</p> <p>Sire verified, free of genetic defects & Homozygous Polled.</p>
---	--

- [KOANUI ROMAN 0293 \(BM\) Polled](#)
- [KAIRURU IKE 110006 Polled](#)
- [KAIRURU MOONBEAM 090031 Polled](#)
- **Sire: [KAIRURU MAJOR 150555 Polled](#)**
- [MATARIKI HOLY-SMOKE \(BM\) Polled](#)
- [KAIRURU DIANA 100008 Polled](#)
- [KAIRURU DIANA 080043 Polled](#)
- Animal: [MATATOKI UXBRIDGE 1081 Polled](#)**
- [MATARIKI DUNSTAN Polled](#)
- [MONYMUSK GALLANT 110089 \(BM\) Polled](#)
- [MONYMUSK DOROTHY 070083 \(SBM\) Polled](#)
- **Dam: [MATATOKI MINERVA 1720 Polled](#)**
- [OKAWA NAVAL 8040 Polled](#)
- [MATATOKI MINERVA 1130 Polled](#)
- [WESTHOLM MINERVA H98 Polled](#)

April 2023 Hereford BREEDPLAN																			
	Calving Ease DIR (%)	Calving Ease DTRS (%)	Gestation Length (days)	Birth Wt. (kg)	200 Day Wt (kg)	400 Day Wt (kg)	600 Day Wt (kg)	Mat Cow Wt (kg)	Milk (kg)	Maternal Value (kg)	Scrotal Size (cm)	Days to Calving (days)	Carcase Wt (kg)	Eye Muscle Area (sq cm)	Rib Fat (mm)	Rump Fat (mm)	Retail Beef Yield (%)	IMF (%)	Docility
EBV	+3.7	-0.1	-0.3	+3.2	+30	+58	+80	+67	+14	-	+1.9	-3.4	+57	+5.8	+1.4	+1.8	+1.1	+0.8	-
Accuracy	49%	43%	55%	74%	68%	68%	70%	61%	55%	-	75%	34%	58%	48%	50%	54%	48%	47%	-
Breed Avg. EBVs for 2021 Born Calves Click for Percentiles																			
EBV	+2.8	+2.3	-0.8	+3.9	+34	+56	+79	+66	+17	+25	+2.2	-3.1	+53	+3.9	+0.8	+1.0	+0.8	+0.6	+28

Traits Analysed: CE,BWT,200WT,400WT,600WT,SS,FAT,EMA,IMF

Lot 9: Matatoki Upton 1083



Herd No: 1656210083

DOB: 14/09/2021

Nice chunky look to this guy. Very quiet and good markings.

Sire verified, free of genetic defects & Homozygous Polled.

— [KOANUI ROMAN 0293 \(BM\) Polled](#)

— [KAIRURU IKE 110006 Polled](#)

— [KAIRURU MOONBEAM 090031 Polled](#)

— **Sire:** [KAIRURU MAJOR 150555 Polled](#)

— [MATARIKI HOLY-SMOKE \(BM\) Polled](#)

— [KAIRURU DIANA 100008 Polled](#)

— [KAIRURU DIANA 080043 Polled](#)

Animal: [MATATOKI UPTON 1083 Polled](#)

— [KOANUI SAFETY 8557 Polled](#)

— [MATARIKI 120087 \(ET\) Polled](#)

— [MATARIKI GIRLIE 00323 Polled](#)

— **Dam:** [MATATOKI GAYLASS 1567 Polled](#)

— [OKAWA NAVAL 8040 Polled](#)

— [MATATOKI GAYLASS 1308 Polled](#)

— [MATATOKI GAYLASS 1 08 Polled](#)

April 2023 Hereford BREEDPLAN																			
	Calving Ease DIR (%)	Calving Ease DTRS (%)	Gestation Length (days)	Birth Wt. (kg)	200 Day Wt (kg)	400 Day Wt (kg)	600 Day Wt (kg)	Mat Cow Wt (kg)	Milk (kg)	Maternal Value (kg)	Scrotal Size (cm)	Days to Calving (days)	Carcass Wt (kg)	Eye Muscle Area (sq cm)	Rib Fat (mm)	Rump Fat (mm)	Retail Beef Yield (%)	IMF (%)	Docility
EBV	+0.6	-2.1	+0.9	+3.9	+31	+57	+79	+71	+11	-	+2.6	-3.6	+50	+3.8	+1.0	+1.4	+0.7	+0.6	-
Accuracy	48%	41%	50%	74%	69%	68%	70%	61%	55%	-	75%	31%	57%	45%	48%	52%	46%	45%	-
Breed Avg. EBVs for 2021 Born Calves Click for Percentiles																			
EBV	+2.8	+2.3	-0.8	+3.9	+34	+56	+79	+66	+17	+25	+2.2	-3.1	+53	+3.9	+0.8	+1.0	+0.8	+0.6	+28

Traits Analysed: CE,BWT,200WT,400WT,600WT,SS,FAT,EMA,IMF

FMG Premier Bull Sale Insurance



What is FMG Premier Bull Insurance?

FMG provides automatic insurance for all bulls auctioned at a FMG Premier Bull Sale up to the value of \$50,000 for 14 days at no cost to the purchaser. For any bull purchased over \$50,000 talk to an FMG representative.

What is the length of cover?

You will automatically be insured for the specified bull for 14 days. You also have the option to extend the length of insurance to 12 months. Simply tick the "Extend your Premier Bull Insurance" option on the Purchaser Slip. The specified bull is then insured for the remaining period of 12 months at 6.5% of the purchase price. If you would like to discuss an alternative timeframe, please have a chat with your local FMG representative.

You don't have to pay today, FMG will invoice you for this additional cover.

What are the benefits?

✓ Infertility	Cover if your specified bull has to be euthanised due to permanent infertility caused by certain accidents, disease, or illness.
✓ Theft or death	We cover your specified bull for theft or death caused by certain accidents, disease, or illness (including while in transit anywhere in New Zealand).
✓ Vet costs	We cover up to \$500 for treatment of your specified bull to prevent death.

What will FMG pay?

FMG will pay the fair market value of your specified bull, less any amount you receive for the sale of the carcass, up to the amount shown on the insurance certificate.

14 DAYS FREE COVER. NO BULL.



We want to ensure you get the very best cover on sale day and the best service every day after that. That's why we offer to insure your bull purchased at any **FMG Premier Bull Sale** for 14 days free* from the fall of the hammer.

Extend your cover. All bulls purchased at auction up to \$50,000 can be insured for 6.5% of the purchase price on a 12-month policy. You can choose to extend your 14 days free insurance on the Purchaser Instruction and Insurance Slip. For terms less than 12 months, different rates apply.

So talk to your FMG Rural Manager about FMG Premier Bull Sales Insurance.

* Subject to standard underwriting criteria. Please note this is only a summary of FMG products and services and is subject to our specific product documentation. For full details, refer to the relevant policy wording at fmg.co.nz/livestockpolicy

We're here for the good of the country.

FMG
Advice & Insurance